



ADHESIVE FOR USE WITH TILES, STONES & MOSAICS

index

ABOUT US 1

UNDER LAYMENT

• Ferro Screed 2 3

ADHESIVES

• Adhesive Mixing & Application 4 5

• Vitrified Tile Adhesive
Ferro - 1122 Adhesive 6

• Wood Plus Adhesive Admix
FAD - 33 Admix 7

• Stone Adhesive
Ferro - 1133 Adhesive 8

• Adhesive Admix
FAD - 1 Admix
FAD - 11 Admix 9

• Super Platinum Adhesive
Ferro - 1177 Adhesive 10

• Ceramic Tile Adhesive
Ferro - 1111 Adhesive 11

• Premium Mortar Adhesive
Ferro - 1155 Adhesive 12 13

• Premium Mortar Admix
FAD - 22 Admix 14

• Glass Mosaic Adhesive
Ferro - 1144 Adhesive 15

• Block Laying Adhesive
Ferro - 1188 Adhesive 16 17

• Slurry Bond Adhesive
Ferro - 1166 Adhesive 18

• Epoxy Adhesive
Ferro - 202 Adhesive 19

• Spot Fixing Epoxy Adhesive
Ferro - 302 Adhesive 20

WATER PROOFING

• Water Proofing Membrane
Ferro - 121 Water Proofing 21

GROUT

• Grout Mixing & Application 22 23

• Unsanded Grout
Ferro - 101 Polymer Grout 24

• Hydrophobic Unsanded Grout
Ferro - 101 Polymer Grout 25

• Sanded Grout
Ferro - 101 Polymer Grout 26

• Hydrophobic Sanded Grout
Ferro - 102 Polymer Grout 27

• Grout Admix
FAG - 1 Admix 28

• Tile Cleaner
3 in 1 Tile Cleaner 29

• Epoxy Grout
Ferro - 102 Grout 30 31

• Sprinkling Grout
Ferro - 102 Grout 32 33

SEALERS

• Sealer Mixing & Application 34 35

• Aqua Sealer
Ferro - 201 Sealer 36

• Aqua Plus Sealer
Ferro - 201 Sealer 37

• Impregnator Plus Sealer
Ferro - 201 Sealer 38

• Heavy Duty Sealer
Ferro - 201 Sealer 39

GYP SUM PLASTER

• Plaster Mixing & Application 40 41

• Gypso Bond
Ferro - 400 Bond 42 43

• One Coat Plaster
Ferro - 500 Plaster 44

• Premium Plaster
Ferro - 600 Plaster 45

• Platinum Plaster
Ferro - 700 Plaster 46

WALL PUTTY

• Ferrous Crete (SARA) Wall Putty 47

• Wall Putty Mixing & Application 48 49

PRODUCT TO BE USED 50 51

PROJECT GALLERY 52

PRESTIGIOUS CLIENT'S 53

about us

We are one of the leading manufacturer of Polymer Modified Adhesives in India. The manufacturing unit is in Faridabad (Harayana) – the largest Industrial town of India. The company is specialized in producing Exterior and Interior finishes, Tile Adhensives, Grouts, Sealers, Plasters, Water Proofing, High-end interior finishes, Wall Putty and other building products for commercial and residential applications.

Utilizing the advanced polymer technology, FERROUS CRETE has developed a complete range of protective coating to maintain, protect and enhance the performance and appearance of structures our tile & stone installation products bring outstanding quality.

FERROUS CRETE brands are supported by a fully equipped modern research, development and testing facilities. Innovation in marketing and merchandising added with the experience of sales team provide technical support for the markets we serve, which includes professional builders, contractors, engineers, architects, municipalities, and building material retailers.

FERROUS CRETE is first amongst Indian manufacturers of tile and stone installation material to obtain the prestigious ISI Mark. This clearly demonstrates our attitude and commitment to provide high quality standards. We are also ISO 9001 : 2008 accredited.

Focused on the construction chemical business, we continue to invest in production equipments and facilities to provide our customers with top quality products at competitive prices.

Ferro Screed



Ferro screed is special polymer modified screed use with clean water and aggregates. It gives high bond strength, Water resistant, and good compressive and flexural strength. Suitable for interior and exterior use. Ideal for use in green building. Ferro Screed has an accelerated cure allowing for installation of ceramic, vitrified and stone flooring in 24 Hours after placement and non breathable flooring system in 48 Hours. Ferro Screed can easily be screeded or sloped, much better work ability and fast curing than conventional mortar. It is ideal for interior or exterior repair. Such as filling trenches re-stooping balconies and forming screed that may or may not receive flooring installation subsequent.

Applications

For horizontal exterior and interior structural concrete repair and concrete topping as for renovation and resurfacing interior and exterior horizontal concrete substrates found in residential, commercial and institutional.

Advantages

- Self curing
- Rapid drying
- Ready to use, ensures constant level of performance
- Mechanic resistant for screeds subject to heavy traffic
- High dimensional stability
- Eco friendly

Surface Preparation

- All substructures must be structurally sound stable and solid with all loose material removed.
- Concrete surfaces must be mechanically profiled and prepared by short blasting sandblasting water jetting scarifying or other engineer approved method.
- Do not apply over standing water or wet surfaces.
- Concrete substrate and ambient room temp must be between 7° C and 40° C before application.

Product Mixing and Application

- 40 Kg need approx 14 - 16 lts of water for an ideal mix. Adjust the water content depending on the site conditions.
- Do not over mix. Over mix can come air entrapment which could shorten pot life.
- Do not over water material or Ferro screed without perform as specified.
- Ferro screed can be applied in practical manners following the traditional phases required to produce cement based screeds.

- If too much water issued this may result in shrinkage and cracking and a longer drying time.
- Adjust compacting according to the final finish required.
- Immediately after application and compacting of the screed adjust the surface using a metal flattener and seal the surfaces itself using a float.
- The finish of the screed carried out by moistening. It with water and using a rotating steel disk very often in the creation of a surface crust which is not very absorbent and will extend the screed drying time.

Coverage

Bed thickness	Ferro Screed	Aggregates	Approx Coverage
12 mm	40 Kg.	160 Kg.	80 Sq.ft.
25 mm	40 Kg.	200 Kg.	48 Sq.ft
35 mm	40 Kg.	240 Kg.	40 Sq.ft
50 mm	40 Kg.	280 Kg.	16 Sq.ft.

Suitable for interior and exterior floor screed.

Technical Data

Pot Life	:	Approx. 1.5 - 2 Hrs.
Temp. range for application	:	5°C to 40° C
Thickness of the screed	:	8 to 60 MM
Foot Traffic	:	After 8 Hrs.
Time for laying tiles	:	24 Hrs

Colour : Grey
Pack Size : 40 Kg.


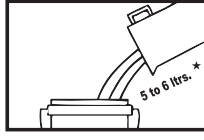
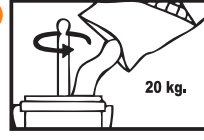









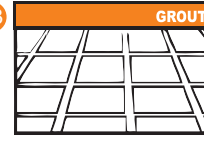
Introduction

Ferrous Crete tile adhesive are cement based specially polymer modified quick set adhesive, suitable for all type of tiles and stones application in interior and exterior locations.

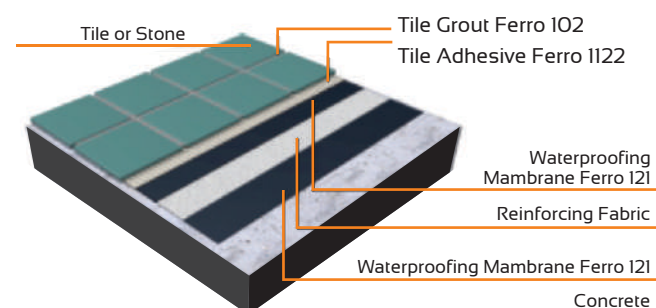
Surface Preparation

- All Substrates must be structurally sound, dry solid and stable the substrates should be clean and free of dust, dirt, oil, grease, paint curing compounds, concrete sealers, loosely bonded topping, old adhesive residues and any other substances that may prevent or reduce adhesion. If the substrate contains there substances they must be mechanically removed.
- All substrates must be plumb and flat to tolerance in plane.
- Imperfections and irregular (holes, voids, cracks, depression etc) must be corrected & surface must be smooth before the application of adhesive otherwise it reduce the coverage.

Product Mixing & Application

-  Remove all Dust, Water, Oil & Sealers from Surface/ Substrate.
-  Add 5 to 6 ltr. Admix/water in to empty bucket.
-  Add 20 Kg. Adhesive into Admix/water and mix it till attains uniform paste.
-  **WAIT**
5-10 MIN
Slake the Material for 5 to 10 minutes.
-  Again Mix the material then take the material on notch trowel.
-  Use flat side of the trowel and spread the adhesive uniformly.
-  Comb the adhesive with the help of Notch trowel.
-  Spread the material back side of the tile, stone also (If tiles/ stones size is 12" X 12" or more than that).
-  Press the tiles/stones firmly in to position by twisting action
-  Press the tiles/stones gently with the help of wooden hammer to make uniform surface.
-  Clean the tiles/stones surface with wet cloth.
-  **WAIT**
24 HR
For Foot Traffic wait up to 24 Hrs.
-  **GROUT**
After 24 Hrs you can do the grouting with ferro 101 & ferro 102 grout.

INSTALLATIONS SYSTEM



Coverage

Notched Trowel	:	Per Sq.M
3 x 3 mm	:	Approx 2.3 kgs
6 x 6 mm	:	Approx 5.0 kgs
8 x 8 mm	:	Approx 5.9 kgs
10 x 10 mm	:	Approx 6.8 kgs

Shelf Life: 12 months in dry unopened bags.

Precautions

Care should be taken to avoid dust inhalation while mixing and handling powder. In case of contact with eyes or mouth, wash with plenty of water. Keep out of reach of children. Store in cool and dry place.



FERRO - 1122 (Vitrified Tile Adhesive)



Ferro-1122 is polymer modified cement based tile adhesive specially designed for heavy duty applications for fixing vitrified tiles etc. on internal vertical and horizontal surfaces. This highly flexible adhesive also has an excellent waterproofing ability. When properly applied, it takes care of hollowness problem. Ideal for use in green building.

Applications

For fixing heavy duty tiles including natural stones and large format tiles on internal wall / floor surfaces.

Colour: Grey & White

Pack Size: 20 Kg.

Type : 2

Technical Data

Density	:	1.7 kg/liter
Pot Life	:	1.5-2 hrs
Open Time	:	30 minutes
Adjustability	:	27 minutes
Setting Time	:	Approx 1 Day
Full Strength	:	Approx 14 Days
Shear Strength	:	Approx 12.0 KN

Advantages

- Self curing adhesive
- Highly flexible
- Easy to apply
- Also suitable for marble tiles
- Excellent slump and grab
- *Suitable for thin & thick bed Installation



FAD - 33 ADMIX (Wood Plus Adhesive Admix)

FAD - 33 Admix is superior Polymers Adhesive Admix specially designed for use with Ferro - 1122 to make highest flexible and superior strength adhesive for the thin bed applications. It is recommended for tile applications on the interior wooden surfaces. Ideal for use in green building.



Applications:

Suitable for plywood (Interior only), cement mortar, plaster, and gypsum board (Interior only).

Pack Size : 5 ltr. & 20 ltr.

Shelf Life : 12 months when stored in unopened bucket.

Advantages

- More flexible
- High bond strength
- Shock and vibration resistant
- Easy to use
- Sag resistant



FERRO - 1133 (Stone Adhesive)



Ferro-1133 is a high strength polymer modified adhesive. It makes the stone resistant to stains, seepage and discoloration. Ferro-1133 is specially designed for use in admixture with FAD-1/FAD-11 ADMIX to produce a high strength adhesive that meets and exceeds the requirement of Indian and British standards. Ferro-1133 can also be used for cladding of stones to external building surfaces. Ideal for use in green building.

Applications

Suitable for interior and exterior surfaces, wet (floor) and dry areas, walls, floors and ceilings of new and renovated buildings. Also suitable for fixing big size tiles and stone slabs on interior & exterior facades.

Colour : Grey & White

Pack Size : 20 Kg.

Type : 2

Technical Data (with ADMIX)

Density	:	1.7 kg/liter
Pot Life	:	2-3 hrs
Open Time	:	30 minutes
Adjustability	:	35 minutes
Setting Time	:	Approx 1 Day
Full Strength	:	Approx 14 Days
Shear Strength	:	Approx 18.9 KN

Advantages:

- Self curing adhesive
- Highly flexible
- Economical- Saves time and money
- Excellent for stone cladding
- Fortified extra adhesive strength
- Suitable for thick bed Installation



FAD - 1 (Adhesive Admix)

FAD-1 ADMIX is a polymer liquid adhesive admixture, specially designed to fortify Ferro-1133 to make ultra high strength mortar for installing all types of ceramic & vitrified tiles and natural stones exceeding the requirements of National (ISI) and British standards. Ideal for use in green building.



Applications

Interior and exterior wet (floor) and dry areas, wall, floors and ceilings new and remodel construction, residential or commercial application, Installation of big tiles and stone slabs on interior & exterior facades.

Pack Size : 5 ltr. & 20 ltr. Shelf Life : 12 months when stored in unopened bucket.

Advantages: • Excellent strength • Highly water resistant • Shock and impact resistant • Provides extra open time and adjustability

FAD - 11 (Premium Adhesive Admix)

FAD - 11 is Premium Adhesive Admix Polymer modified adhesive admix specially designed for use with Ferro 1133 to make high strength applications for interior and exterior. For installing all types of ceramic, Vitrified Tiles and Natural Stones. Exceeding the requirements of ANSI and EU Standards. Ideal for use in green building



Applications

Suitable for interior and exterior surfaces, wet (floor) and dry areas, walls, floors and ceilings of new and renovated buildings. Also suitable for fixing big size tiles and stone slabs on interior & exterior facades.

Pack Size : 5 ltr. & 20 ltr.

Shelf Life : 12 months when stored in unopened bucket.

Advantages: • Superior bond strength and shock resistant • Weather resistant • Recommended for heavy traffic areas • Water resistant • Easy to use

FERRO-1177 (Super Platinum Adhesive)



Ferro 1177 special designed for use with water to produce high strength that meets requirement of Indian, ANSI, British Standards. It is a substitute for 1133 + FAD 1 Adhesive Admix suitable for use in interior and exterior installation of Ceramic / Vitrified and Natural Stone. Ferro 1177 is a ideal for use in green building.

Applications:

Application on all substrates especially for interior and exterior use Pools, fountain and facades, for tiles and stone installation on interior and exterior surfaces. Suitable for use in water bodies.

Colour : Grey & White

Pack Size : 20 Kg.

Type : 2

Technical Data:

Density	:	1.7 kg/litre
Pot Life	:	2-3 hrs
Open Time	:	33 minutes
Adjustability	:	32 minutes
Setting Time	:	Approx 1 Day
Full Strength	:	Approx 14 Days
Tensile Strength	:	Approx 960 N
Shear Strength	:	Approx 18.2 KN

Advantages :

- Single component mixed with water
- High bonds strength
- Water resistant
- Shock impact resistant
- High shear strength
- More flexible adhesive



FERRO-1111 (Ceramic Tile Adhesive)



Ferro-1111 is grey cement based polymer modified quick set tile adhesive. It gives excellent bond on cementitious surfaces like concrete and plaster. Ferro-1111 Adhesive forms a waterproof barrier between two surfaces and has excellent 'grab' properties. Ideal for use in green building.

Applications:

For fixing all types of ceramic tiles on interior substrates e.g. floor / kitchen/ bathroom wall/ corridor / lobby/ meeting rooms/ halls etc.

Colour: Grey & White

Pack Size: 20 Kg.

Type : 1

Technical Data:

Density	:	1.8 kg/litre
Pot Life	:	1.5-2 hrs
Open Time	:	38 minutes
Adjustability	:	32 minutes
Setting Time	:	Approx 1 Day
Full Strength	:	Approx 14 Days
Tensile Strength	:	Approx 960 N
Shear Strength	:	Approx 11 KN

Advantages:

- Self curing adhesive
- Flexible, shock and Impact resistant
- Easy to use
- Fast and economical
- High bond strength





Ferro 1155 is a high performance two part system. Specially design for use with FAD 22 Polymer liquid. It produce high strength thick bed adhesive up to 50 mm for installation of all types of tiles and natural stone. This system has exception bond strength, flexural strength elongation and freeze/ thaw durability. Ideal for use in green building.

Applications:

Most interior and exterior residential on floors, walls and ceilings. Installation of ceramic tiles porcelain tile, glass tile, quarry tile, pavers, saltillo tile and most types of marble, granite, natural stone etc.

Colour: Grey & White

Pack Size: 20 Kg.

Type : 2

Technical Data (with FAD-22 ADMIX):

Density	:	1.7 kg/liter
Pot Life	:	1.5-2 hrs
Open Time	:	30 minutes
Adjustability	:	35 minutes
Setting Time	:	Approx 1 Day
Full Strength	:	Approx 14 Days
Shear Strength	:	Approx 14.4 KN

Advantages:

- Self curing adhesive
- Highly flexible
- Economical- Saves time and money
- Excellent for stone cladding
- Fortified extra adhesive strength
- Suitable for thick bed Installation



Product Mixing and Applications:

- Use approx 20 Kg. of Ferro – 1155 with 1 ltr of FAD – 22 + 4 ltr of water, mix by hand/slow speed mixer to semi dry consistency
- Choose a typical notched trowel with sufficient depth to achieve maximum mortar contact to both the tile and substrate for all interior and exterior installations.
- Commercial floor and wet application if tile size is more than 12" x 12" back buttering is required.
- Apply additional mortar; combine it in a single direction with the trowels notched side.
- Spread only as much mortar as can be tiled before product skins over. Open time can vary with job site conditions.
- Place the tiles firmly into the wet mortar. Push the tile back and forth in a direction perpendicular to trowel lines to collapse the mortar ridges and to help achieve max coverage.
- Remove excess mortar from the joints area so that at least 2/3 at the tile depth is available for grouting

Coverage:

Thickness	Ferro - 1155	FAD 22 Admix	Water	Coverage
Premium Mortar Adhesive				
12 mm	20 Kg.	1.25 ltr.	3.75 ltr.	25 Sqft.
25 mm	20 Kg.	1.25 ltr.	3.75 ltr.	12 Sqft.
35 mm	20 Kg.	1 ltr.	4 ltr.	8 Sqft.
50 mm	20 Kg.	85 ltr.	4.15 ltr	5 Sqft.



FAD - 22 ADMIX (Premium Mortar Admix)

FERRO - 1144 (Glass Mosaic Tile Adhesive)



It is a Premium Mortar Admix used to enhance the performance of cementitious mortars, plaster, concrete mixes and toppings for the restoration of horizontal, vertical and over head concrete. It improves resistance to abrasion and freeze / thaw cycles and non reemulsifiable. It is a concentrated liquid admix diluted with water on site. It gives optimizes bond to concrete substrate. Ideal for use in green building.

Applications:

Suitable for pre cast, cast – in – place post tensioned and pre stressed concrete repair for interior and exterior installation.

Pack Size : 5 ltr. & 20 ltr.

Shelf Life : 12 months when stored in unopened bucket.

Advantages:

- High performances bond
- Best for most difficult tiles
- Produce high strength thick bed
- Adhesive up to 50 mm
- High bond strength
- Easy to use
- High shear and tensile strength
- Non cracking
- High flexibility



Ferro-1144 is white cement based polymer modified tile adhesive specially designed for glass mosaic applications on internal/external vertical/horizontal surfaces. Being excellent in waterproofing, can be used for water bodies. Ideal for use in green building



Applications:

Suitable for Marble, Glass tiles, Glass mosaics, vitrified, ceramic tiles on internal/external wall* / floor, Swimming pools, Bathrooms etc.

Colour: Grey & White

Pack Size: 20 Kg.

Type : 2

Technical Data:

Density	:	1.7 kg/liter
Pot Life	:	1.5-2 hrs
Open Time	:	30 minutes
Adjustability	:	32 minutes
Setting Time	:	Approx 1 Day
Full Strength	:	Approx 14 Days
Tensile Strength	:	Approx 960 N
Shear Strength	:	Approx 11.4 KN

Advantages:

- Self curing adhesive
- Highly flexible
- Economical- Saves time and money
- Excellent for swimming pools, fountains etc.



Ferro 1188 is a thin set adhesive for laying of AAC blocks, fly Ash bricks and Concrete blocks. It special designed to just mix water. It has a long open time. It is a polymer modified adhesive for masonry building applications, optimum for the adhesion of AAC blocks. It has high shear bond strength. Ferro 1188 replaces traditional method of 20-25 mm thickness with 3-6 mm thickness of Ferro 1188. It is ideal for use in green building.

Applications:

Suitable for AAC blocks, Cement blocks, Concrete block, Hollow blocks, Cellular Concrete blocks, Grouting the cement windows door frames etc.



Product Mixing and Application:

- Add 0.25 – 0.30 lit of water per kg. Ferro – 1188 and mix thoroughly to obtain slump free adhesive.
- Apply mixture to the block with the notched trowel, first with the straight edge.
- Thickness of the Adhesive should be 3 to 6 mm.
- Place the block on the laid Ferro – 1188 in proper line and level.
- After first block apply it in the same manner.
- Clean off surplus adhesive from the blocks face and between joints.

Coverage:

It depend on the size of the blocks and quality of substrates and thickness of adhesive. Approx. 50 – 60 Sq.ft. area of 3 mm bed thickness.

Colour : Grey & White Pack Size : 20 Kg.



Technical Data:

Density	: 1.7 kg/liter
Pot Life	: 1.5-2 hrs
Open Time	: 30 minutes
Adjustability	: 27 minutes
Setting Time	: Approx 1 Day
Full Strength	: Approx 14 Days
Shear Strength	: Approx 12.0 KN

Advantages :

- Single components, just add water
- Long open time
- Ultimate adhesion for AAC blocks, Concrete blocks etc
- High Shear and compressive strength
- High bond strength
- Rapid setting
- Fast installation
- No Curing required
- More economical, saves time
- Easy to use
- High strength, Polymer modified
- Reduces the structure load
- Non shrinkage adhesive
- Eliminating material waste

FERRO - 1166 (Slurry Bond Adhesive)



Ferro 1166 is special Polymer Modified Adhesive specially designed for use with water to make free flowing, adhesive slurry. Ferro 1166 can be used for fixing of Ceramic / Vitrified and natural stone on fresh cement based screed. It improves workability. Ideal for use in green building.

Applications:

Suitable for interior exterior and wet areas (floors).

Colour : Grey & White **Pack Size :** 20 Kg. **Type :** 2

Technical Data:

Density : 1.7 kg/liter
 Pot Life : 1.5-2 hrs
 Open Time : 30 minutes
 Adjustability : 27 minutes
 Setting Time : Approx 1 Day
 Full Strength : Approx 14 Days
 Shear Strength : Approx 12.0 KN

Advantages:

- High bond strength.
- Shock and impact resistant.
- Easy to use.
- Water repellent.
- Suitable for wet areas (floor).
- Single Component: Mixed with water.



FERRO - 202 (Epoxy Adhesive)

Ferro 202 is specially modified formulated non-sag epoxy filling paste and adhesive. It is ideally suited for the installation of ceramic tiles on steel surfaces, vinyl tiles and exterior grade plywood.



Applications:

Suitable for exterior grade plywood concrete, cement mortar, steel and vinyl tiles.

Colour : OffWhite **Pack Size :** 16 Kg. **Shelf Life :** 24 months in sealed packing

Coverage: Depend upon the various size and type of tile.

Technical Data:

Consistency : Non sag paste
 Color : Off White
 Pot Life at 25°C : 45 minutes
 Loading time : 120 minutes (25°C)
 Full cure at 25°C : 24 hours
 Minimum application : 10°C temperature

Advantages:

- Smooth and easily workable
- Non - Toxic, Non - flammable on vertical or overhead surface
- Very high bond strength
- Excellent chemical resistance
- Water cleanable



FERRO - 302 (Spot Fixing Epoxy Adhesive)



Ferro 302 is a two component, 100% solids, chemical resistant, exterior grade epoxy adhesive. Non sag gel epoxy. It is ideal for spot fixing. It can be used for cladding of tiles and stones to external / internal building surfaces. It is suitable for tiles in ceilings.

Applications:

It is suitable for wall concrete and concrete columns etc.

Colour : Off White **Pack Size :** 5 Kg. & 10 Kg. **Shelf Life :** 24 months in sealed packing

Coverage: Depend upon the various size and type of tile and stone.

Technical Data:

Consistency : Non sag paste
 Color : Off White
 Pot Life at 25°C : 45 minutes
 Loading time : 120 minutes (25°C)
 Full cure at 25°C : 24 hours
 Minimum application temperature : 10°C

Advantages:

- Smooth and easily workable
- Non – sag on vertical or overhead surface
- Very high strength permanent bonds
- Tensile and compressive strength superior to concrete
- Excellent chemical resistance
- Ideal for stone installation on external facade
- Ideal for use on dry or damp surfaces



FERRO - 121 (Water Proofing Membrane)

It is special polymer modified waterproofing membrane product. It is a single component product special polymer gives more flexibility, highly water proofing and highly bond strength. Ferro 121 waterproofing membrane is spl. design for bathroom, Showers, terrace gardening, swimming pools, fountains and facades. It is flexible polymeric membrane coating, has been formulated for waterproofing applications. It is roller / brush applied, waterproofing membrane coating for direct use under thin and thick bed installation of ceramic, vitrified tile, stone and other finishes.



Applications:

Interior, exterior, Swimming pools, fountains and water features, Spas and hot tubs, Kitchens and food processing areas, Terraces and balconies over unoccupied spaces.

Colour : Green **Pack Size :** 20 ltr.

Coverage:

Approximate 21 to 27 sq. mtr. per 20 ltr. bucket coverage varies based on surface, porosity and application.

Advantages:

- Single component, No fabric required
- Green colour for easier inspection
- Applies quickly with a paint roller, brush or trowel
- Foot traffic in 4-6 hours
- Cold applied, eco friendly
- More flexible.
- Protect from fungal and bacteria.
- No curing required

Introduction:

Grout is polymer / Epoxy base tile joint filler used for filling joints of all kind of tiles and stones.



Remove all Dust, Water, Oil & Sealers from Tile Surface with Scrubber.

Surface Preparation:

- The application of a grout release over certain types of porcelain or textured surfaces tiles or stone may be advantageous where a fine surface porosity might trap fine Cement Particles or colour pigments. Seek the advice of the tile and stone manufacture and site test (mockup) on separate sample before grouting.
- Before grouting make sure the tiles or stone are firmly set and the adhesive, cement or mortar is completely dry.
- Remove all spacers.
- Grout joints must be clean and free of standing water dust, dirt and foreign matter. Remove excess adhesive or mortar from the joint area so that 2/3 of the depth of the tile is left available for grouting
- Clean the tiles or stone surface to remove dust, dirt, mortar adhesive and other contaminants that may cause grout discoloration.

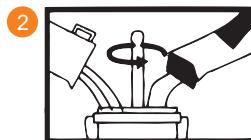
Product Mixing and Application:

Ferro - IO1 Polymer Grout

Mixing



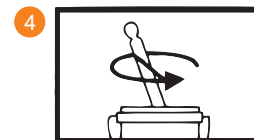
Add 400 ML. of FAG-1/ water in to bucket.



Add 1 Kg. Grout in to FAG - 1 Admix/water & mix it will attains uniform paste.



Slake the Material for 5 to 10 minutes.

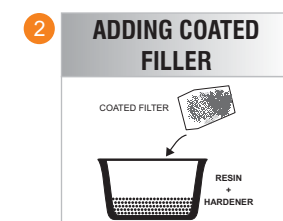
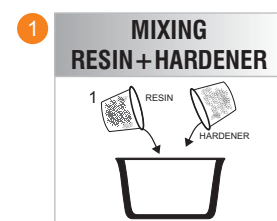


Again Mix the material.

- Always mix complete units. Partial mixing will result in uncured grout. Do not add other material to this mixture
- Add 0.40 liter of FAG 1 Admix/Water per kg Ferro IO1 and mix until a slump free and smooth grout is obtained.

Ferro IO2 Epoxy Grout

Mixing

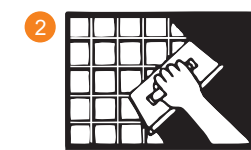


- In a clean container mix all of Resin and all of Hardener. Allow enough time for all the material in the Resin and Hardener containers to flow completely out. Mix it until a homogenous, consistent mixture is obtained. Do not over mix.
- Add Coated Filler to the Resin and Hardener mixture and mix it.
- Mix thoroughly until a homogenous consistent colour is obtained.
- Always mix complete units. Partial mixing will result in uncured grout. Do not add other material to this mixture.

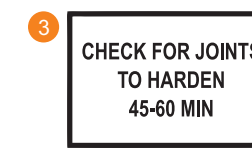
Product Applications:



Fill the tile joints with Grout with using a rubber float.



Remove the Excess Grout with help of rubber float.



Check for joints to harden 45 to 60 mins.



Take a wet scrubber.



Clean the Surface with wet scrubber.



Wait up to 24 Hrs.



After 24 Hrs you can allow the foot Traffic.

- Remove mixed product from the container and place in small piles on the tile surface.
- Use a hard - rubber float with a sharp edge to force the grout into the joints in a continuous manner leaving it flush with the tile edge.
- Be certain that all joints are well - compacted and air free of voids and gaps fill the joints with the maximum amount of grout possible.
- Thoroughly remove excess grout from the face of the tile before the epoxy loses its plasticity or begins to set.

Coverage:

Epoxy Grout

$$\frac{(\text{Tile length} + \text{Tile breadth}) \times \text{Tile Thickness} \times \text{Joint width} \times \text{specific gravity}}{(\text{Tile length} + \text{Joint width}) \times \text{Tile breadth} + \text{Joint width}} = \text{Kg/sq. mtr}$$

Specific gravity = 1.75

Polymer Grout

$$\frac{(\text{Tile length} + \text{Tile breadth}) \times \text{Tile Thickness} \times \text{Joint width} \times \text{wet density}}{(\text{Tile length} + \text{Joint width}) \times \text{Tile breadth} + \text{Joint width}} = \text{Kg/sq. mtr}$$

Wet density = 1.70

Precautions:

Care should be taken to avoid dust inhalation while mixing and handling powder. In case of contact with eyes or mouth, wash with plenty of water. Keep out of reach of children. Store in cool and dry place.

FERRO - 101 Polymer Grout (Unsanded Grout)



Ferro 101 is cement and polymer modified tile joint filler. It effectively fills the gaps and levels it self to give hard wearing and non dusting tile joints. It firmly holds the tiles together to give a long life to the tiles. It can be used for 1 mm to 3 mm joint width max. For excellent performance, fortified with FAG 1 admix. Ideal for use in green building.

Applications:

For interior/exterior residential, commercial floor and wall surface in dry or wet condition.

Pack Size : 1 Kg & 10 Kg. **Shelf Life :** 12 months in sealed packing.

Technical Data:

Density	:	2.0 kg/liter :
Pot Life	:	1.5-2 hrs
Exposure to Foot Traffic:	:	24 hours
Setting Time	:	Approx 1 Day
Full Strength	:	Approx 14 Days

Advantages:

- Very suitable for all tiles and stones
- Shock and impact resistant
- Provides smooth and uniform joints
- Easy to use
- Uniform Colour



FERRO - 101 Polymer Grout (Hydrophobic Unsanded Grout)



Ferro 101 Hydrophobic Polymer Grout is specially modified water resistance. It is a superior product to repel with water, dirt and grime form surface. The grout succeeds due drop effect. It is an ultra premium, fast setting and colour consistent tile grout . It can be used 1 mm to 3 mm maximum. For excellent performance fortified with FAG 1 grout admix to improve strength, discoloration and life.

Applications:

For grouting interior/exterior residential and commercial Floor and wall surface in dry or wet condition for application in submerged condition (swimming pools, spas, water features and fountain), after in approx 3 to 4 days.

Pack Size : 1 Kg & 10 Kg. **Shelf Life :** 12 months in sealed packing.

Technical Data:

Density	:	2.0 kg/liter :
Pot Life	:	1.5-2 hrs
Exposure to Foot Traffic:	:	24 hours
Setting Time	:	Approx 1 Day
Full Strength	:	Approx 14 Days

Advantages:

- Rapid setting
- Water Resistant
- Non cracking
- High strength
- No water leakage
- Weather resistant
- Easy to use.
- Ideal for use in green building



FERRO - 101 Polymer Grout (Sanded Grout)



Ferro 101 Sanded Polymer Grout is a premium grade polymer modified sanded cementitious grout. It can be used for 4 mm to 12 mm maximum. For excellent performance fortified with FAG 1 grout admix to improve Strength, discoloration and life.

Applications:

For interior/exterior floors and walls, joint width from 4 to 12 mm grouting interior/exterior residential and commercial floor and wall surface in dry and wet condition.

Pack Size : 1 Kg & 10 Kg. **Shelf Life :** 12 months in sealed packing.

Technical Data:

Density	:	2.0 kg/liter :
Pot Life	:	1.5-2 hrs
Exposure to Foot Traffic:	:	24 hours
Setting Time	:	Approx 1 Day
Full Strength	:	Approx 14 Days

Advantages:

- For interior and exterior use.
- No shrinkage
- Non cracking
- High strength
- Easy to clean.
- Uniformity in colour.
- Suitable for 4 to 12 mm joints.
- Shock and impact resistant.
- Ideal for use in Green Building.



FERRO - 101 Polymer Grout (Hydrophobic Sanded Grout)



Ferro 101 Hydrophobic Sanded Grout is especially modified for water resistance. It is a superior product to repel water, dirt and grime from surface. The grout succeeds due drop effect is an ultra premium, fast setting for colour consistent, efflorescence. It can be used 4 mm to 12 mm maximum. For excellent performance fortified with FAG 1 grout admix to improve strength, discoloration and life. Ideal for use in green building.

Applications:

For interior/exterior floors and walls, joint width from 4 to 12 mm grouting interior/exterior residential and commercial floor and wall surface in dry and wet condition.

Pack Size : 1 Kg & 10 Kg. **Shelf Life :** 12 months in sealed packing.

Technical Data:

Density	:	2.0 kg/liter :
Pot Life	:	1.5-2 hrs
Exposure to Foot Traffic:	:	24 hours
Setting Time	:	Approx 1 Day
Full Strength	:	Approx 14 Days

Advantages:

- Non cracking
- High strength
- Rapid setting
- Easy to use.
- Water resistant.
- Weather resistant
- Stain resistant



FAG - 1 Admix (Grout Admix)



FAG-1 ADMIX is a polymer based liquid admixture specially designed for use in combination with Ferro 101 polymer grout. FAG-1 ADMIX when used in place of water provides a dense, colorfast grout ideal for all interior and exterior applications. It improves the performance of cement grouts for all types of ceramic & vitrified tiles and stone fixing. It does not allow any moisture/water to seep into the back of the tile preventing its discoloration.

Applications:

Domestic and commercial establishments, laboratories, bakeries, super markets, showrooms, hospital etc.

Pack size : 400 ml. & 5 ltr

Coverage : Depends upon application

Shelf Life : 12 months in sealed packing

Advantages:

- Color fast
- Easy to clean
- Water resistant
- Shock and impact resistant
- High Grout strength



3 in 1 Tile Cleaner

3 in 1 tile cleaner is a special modified tile cleaner suitable for tile cleaning. It can be used to remove efflorescence, cement residues and oxide stain from tile. It can be applied in interior and exterior wall/floor applications.



Applications:

Suitable for ceramic, vitrified tile, concrete and masonry.

Coverage : 10-55 m²/liter depending on dilution.

Storage : Store in normal to dry condition

Shelf Life : 12 months in sealed packing

Pack size : 500 gm. & 5 Kg.

Health & Safety : Use rubber gloves, while handling.

Product Mixing and Application:

- Dilute to the correct ratios as required use 1 part of cleaner to 4 parts clean water.
- Heavily soiled areas may require an undiluted solution to be applied.
- Always test initially on a small areas.
- Liberally apply the solution to the floor area to be cleaned leave in contact with area approx. 1-2 minutes.
- Using a stiff brush or a scouring pad thoroughly scrub the area treated with the solution
- Can not be applied on MARBLES.

Precaution:

Keep out of reach of children. After contact with skin wash immediately with plenty of clean water in case contact with eyes, rinse with plenty of clean water and immediately seek medical advice.

Advantages:

- Easy to use
- Fast acting
- Interior and exterior
- Economical





It is a 3 component product. The grout constituting of Strong Hardener, Resin and Organic coated filler for color fastness. It is a 100 % Solid epoxy grout with high chemical and stain resistance. It is non shrinking, non sagging, fast curing efflorescence free grout. It is ideal for installation where high strength mold and mildew resistant grout joints are required. It has high temperature, resistance and can be steam cleaned suitable for joints between 2 to 12 mm in width. Ideal for use in green building.

Applications:

For interior floor, Wall, Counter Top, Installations, Industrial commercial and institutional wall and floor (Interior) installation grouting ceramic floor Wall, Quarry, Pavers, porcelain and natural stone.

Pack Size:

	1Kg	5 Kg
a) Resin	0.2 Kg.	1 Kg.
b) Hardener	0.08 Kg.	0.4 Kg.
c) Coated Filler	0.720 Kg.	3.6 Kg.

Shelf Life:

12 months when stored in unopened packs.

Technical Data:

Working Temp	:	+15°C to + 30°C
Pot life	:	Approx. 50 minutes at 20°C Approx. 40 minutes at 30°C
Curing Time	:	16 hours at + 20°C
Full carrying Capacity	:	After 4 days at 20°C After 8 days at 10°C
Compression Strength	:	Approx. 65 N/mm2
Elasticity modulus	:	Approx. 4200 N/mm2
Adhesion to tiles	:	Approx. 25 N/mm2
Shrinkage	:	Approx. 0%
Temperature resistance	:	Approx. 80°C

Advantages:

- Acid and chemical resistance suitable for commercial kitchens, dairies, bottling plant breweries, restaurants, hospitals, Schools, Research Laboratories
- High Strength suitable for subway station, shopping malls and airport
- 100 % solid epoxy grout
- Water resistant
- Stain and dirt proof
- Low water absorption
- No shrinkage
- No water seepage





It is a 3 component grout. The epoxy sprinkling grout with sprinkling effect in three various group. The grout constituting of Strong Hardener, Resin and Organic coated filler for color fastness for coated filler. It is a 100 % Solid epoxy grout with high chemical and stain resistance. It is non shrinking, non sagging, fast curing efflorescence free grout. It is ideal for installation where high strength mold and mildew resistant grout joints are required. It has high temp, resistance and can be steam cleaned suitable for joints between 2 to 12 mm in width. Ideal for use in green building.

Applications:

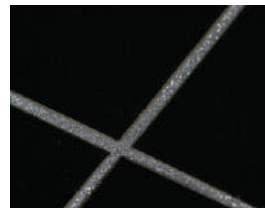
For interior floor, wall and countertop, installations, Industrial commercial and institutional wall and floor (Interior) installation grouting ceramic floor wall Pavers and porcelain and natural stone.

Pack Size:

	1Kg	5 Kg
a) Resin	0.2 Kg.	1 Kg.
b) Hardener	0.08 Kg.	0.4 Kg.
c) Coated Filler	0.720 Kg.	3.6 Kg.

Shelf Life:

12 months when stored in unopened packs.



Technical Data:

Working Temp	:	+15°C to + 30°C
Pot life	:	Approx. 50 minutes at 20°C Approx. 40 minutes at 30°C
Curing Time	:	16 hours at + 20°C
Full carrying Capacity	:	After 4 days at 20°C After 8 days at 10°C
Compression Strength	:	Approx. 65 N/mm ²
Elasticity modulus	:	Approx. 4200 N/mm ²
Adhesion to tiles	:	Approx. 25 N/mm ²
Shrinkage	:	Approx. 0%
Temperature resistance	:	Approx. 80°C

Advantages:

- Dissolves easily
- Permanent Shine
- Water & chemical resistance
- Stain free
- Germ free
- Low water absorption
- No shrinkage
- No water seepage
- Acid resistant

Introduction:

Ferrous Crete Ferro - 201 Sealer is a high strength sealer. It will seal the surface and not change the colour of the substrates.

Surface Preparation:

- All substrates must be structurally sound dry, solid and stable. Remove all dust of florescence, oil, dirt and other contaminants before application.
- It will not seal cracks and voids.
- Surface must be free from frost
- Surface that have been exposed to water (such as rainfall) require of least 2 to 3 days for concrete dry before Ferro - 201 Sealer applied.

Product Mixing and Application:

- Test a small unobtrusive area before coating entire surface.
- Stir well before use.
- Apply to penetrate 20 to 30 minutes.
- Mostly one coat is sufficient.
- More porous surface should have two applications.
- Apply second coat absorbent surface 30 to 40 minutes after first coat.
- Remove excess sealers from surface.
- Allow sealer to cure for 48 hours.

1



STEP-1 : Ferro 201 Sealer

2



STEP-2 : Stir well before use

3



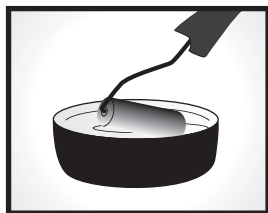
STEP-3 : Open the seal

4



STEP-4 : Put it into open bucket

5



STEP-4 : Apply it with roller brush

Coverage:

Coverage is depend upon the porosity of the surface and atmospheric condition.

Shelf Life : 12 months in sealed packing (If stored in dry area.)

Precautions:

Use this material in a well-ventilated area away from sparks and open flames. Always wear protective goggles and gloves. Local, state and federal regulations should be consulted for proper disposal procedures.



FERRO - 201 Aqua Sealer (Grout & Stone Sealer)



Ferro 201 is a high strength Penetrating Sealer specially designed for use with Granite, Marble, Porous tiles and natural stones to reduce water absorption and enhance the colour of tiles & stones. It is ideal to protect against efflorescence. It will seal the surface and not change the colour of the stones and tile. It gives resistance to water, seepage and discoloration. It is ideal for use in green building.

Applications

Suitable for natural stone, Marble, polymer grout and Porous tiles.

Pack Size: 5 ltr.

Advantages

- Water resistant
- Easy to use
- Weather resistant
- Protect efflorescence

Technical Data:

Test	Unit	Approx. Result
Colour	-	Milky White
Non Volatile Content Approx.	%	5
PH Approx	%	5 to 6
Flash Point Approx.	°C	> 100
Density Approx.	lb / gal	8.216
VOC Content Approx.	g / L	< 300
Specific Gravity at 25°C Approx	-	0.989
Solvent	-	Water

* These figures are intended as a guide and should not be used in preparing specifications.



Ferro 201 Aqua Plus Sealer (Stone Sealer)



Ferro 201 sealer serves as high quality, general purpose water repellents for impregnating and primary mineral and highly alkaline substrates. It is ideal to protect against efflorescence and water. It will seal the surface.

Applications

All kinds of concrete, mineral plaster, sand line brick work, natural and artificial stone, mineral paints and cement fiber boards and exterior primer for paints.

Pack Size: 5 ltr.

Advantages

- High penetration capacity
- Alkaline resistance
- Tack-free drying
- Water repellence develops fast
- Easy to use
- Protects efflorescence

Technical Data:

Test	Unit	Approx. Result
Colour	-	Clear to straw
Non Volatile Content Approx.	%	6.2
PH Approx	%	5.8
Flash Point Approx.	°C	65.5
Density Approx.	g/cm ³	0.96
VOC Content Approx.	g / L	73
Specific Gravity at 25°C Approx	-	0.96
Solvent	-	Silicon Solvent

* These figures are intended as a guide and should not be used in preparing specifications.

FERRO - 201 Impregnator Plus (Stone Sealer)



Ferro 201 stone sealer is a high strength sealer for porous building materials, natural stones, bricks, pavers, marbles, sand stones, granites, porous tiles and grouts. Our sealer penetrate much deeper and bonds superior inside the pores of the treated material and creating invisible oil and water repellent barrier. Ferro 201 stone sealer not only reduces the stains, but also able to protect from serious common structural damage liquids, salt attack, efflorescence and inhibits the growth of mosses and moulds in the porous of the treated material. It different from conventional (mono functional) water repellents. The pores of the substrate remain open. The water vapor diffusion is hardly affected if at all oil, grease, paint etc. are easier to remove from surface that have been treated with Ferro 201 sealer. It is for use in green building.

Applications

Treatment of floors of natural or synthetic stones, ceramic tiles, fibrous cement, facades natural and synthetic stone, marble and granite.

Pack Size: 5 ltr.

Advantages

- Designed for indoor or outdoor use.
- Water and oil resistant.
- Protects the interior and exterior use.
- Easy to use.
- Ideal for use in green building
- Water, oil and dirt repellent treatment of porous sand stone natural stone e.g marble, travertine

Technical Data:

Test	Unit	Approx. Result
Colour	-	Milky White
Non Volatile Content Approx.	%	5
PH Approx	%	6 to 7
Flash Point Approx.	°C	>100
Density Approx.	g/cm ³	0.98
VOC Content Approx.	g / L	< 300
Specific Gravity at 25°C Approx	-	0.985
Solvent	-	Water

* These figure are intended as a guide and should not be used in preparing specifications.



FERRO - 201 Heavy Duty Sealer (Stone Sealer)



Ferro 201 stone sealer is a high strength sealer for porous building materials, natural stones, bricks, pavers, marbles, sand stones, granites, porous tiles and grouts. Our sealer penetrate much deeper and bonds superior inside the pores of the treated material and creating invisible oil and water repellent barrier. Ferro 201 stone sealer not only reduces the stains, but also able to protect from serious common structural damage liquids, salt attack, efflorescence and inhibits the growth of mosses and moulds in the porous of the treated material. It different from conventional (mono functional) water repellents. The pores of the substrate remain open. The water vapor diffusion is hardly affected if at all oil, grease, paint etc. are easier to remove from surface that have been treated with Ferro 201 sealer. It is for use in green building.

Applications

Treatment of floors of natural or synthetic stones, ceramic tiles, fibrous cement, facades natural and synthetic stone, marble and granite.

Pack Size: 5 ltr.

Advantages

- Designed for indoor or outdoor use.
- Water and oil resistant.
- Protects the interior and exterior use.
- Easy to use.
- Ideal for use in green building
- Water, oil and dirt repellent treatment of low porosity natural stone e.g marble, travertine

Technical Data:

Test	Unit	Approx. Result
Colour	-	Milky White
Non Volatile Content Approx.	%	5
PH Approx	%	6 to 7
Flash Point Approx.	°C	>100
Density Approx.	g/cm ³	0.98
VOC Content Approx.	g / L	< 300
Specific Gravity at 25°C Approx	-	0.985
Solvent	-	Water

* These figure are intended as a guide and should not be used in preparing specifications.



Gypsum Plaster

Introduction:

Ferrous Crete plasters are specially formulated gypsum plaster, which can be hand applied over any normal walls / solid backgrounds, in single application in normal thickness. Good surface finish and good impact strength are its unique properties. Ferrous Crete is a natural gypsum base plaster with additives including light weight aggregate.

It attains early strength and does not suffer from inherent shrinkage cracks. It sets hard in a matter of hours and attains maximum strength and bonding on drying. These are specially formulated to suit Indian climate / site working conditions.

Surface Preparation:

- The surface where the product is to be applied should be thoroughly washed and clean.
- The sand cement plaster should be properly cured prior to the application of Ferrous Crete plaster.
- Recommended usage of Ferrous Crete (Ferro - 400 Gypso Bond) a high performance bonding agent on RCC surface to eliminate hacking
- In case of hacking, provide 50 hacks per sq ft and hacks should be 15 mm deep.
- Prewetting needs to be done just before application so as to achieve more spread ability.

Product Mixing and Application:



- Mix plaster as much as required depending on working area.
- Mixing of plaster has to be done in clean container
- Add 1 part of water and 2 part of plaster.
- Thorough mixing is to be done till a consistent paste is formed
- Single coat should not exceed 10 mm in thickness, if higher thickness required then Ferrous Crete plaster to be applied in multiple coats.
- Painting can be started only after complete drying.
- Partially used material to be kept in well secured dry place.

Shelf Life : 3 Months from Date of Manufacturing.

Precautions:

Care should be taken to avoid dust inhalation while mixing and handling powder. In case of contact with eyes or mouth, wash with plenty of water. Keep out of reach of children. Store in cool and dry place.





It is polymer modified product that serves as an excellent bond on the RCC background, and the Internal gypsum based or any other Plaster based wall lining. Its unique formula of Polymer, additives makes it coarse and improves its bonding properties. You need not physically develop the surface by hacking or any other methods.

Ferro 400 Gypso Bond product is specially formulated as a plaster bonding agent for pre-treatment of smooth backgrounds. It contains an aggregate to provide a mechanical key. It is used on smooth, sound, dust free backgrounds, concrete. It is colored green to help avoid missing any areas, and is best applied by rollers, brush to give a complete covering. It should be left a minimum of 24 hours before plastering.

Applications

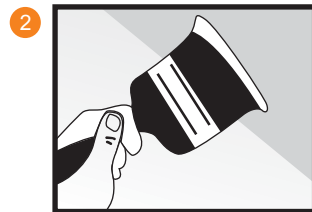
Suitable for internal RCC, Concrete, Gypsum based, Plaster based wall living.

Surface Preparation:

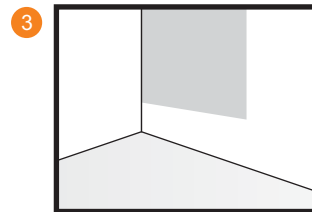
All substrates must be structurally sound, dry solid and stable the substrates should be clean and free of dust, dirt, oil, grease, paint curing compounds, concrete sealers, loosely bonded topping and any other substances that may prevent or reduce adhesion.



STEP1: Open and stir the contents.



STEP2: Apply with a paint brush



STEP3: Dry for 24 hrs. Surface ready for plastering

Product Mixing and Application:

- Mix material properly with clean rod & apply single coat with brush/rollers.
- Do not add water.
- Use a good quality paint brush. The brush should be cleaned with enough quantity of water immediately after use.
- Stir the contents of Ferro – 400 Gypso Bond it thoroughly before use and apply evenly as a single coat application.
- Apply with even distribution of fine aggregates over the surface.
- Allow it to dry thoroughly for around 24 hours. However this can vary depending on both environmental conditions and ventilation.
- Now the surface is ready to apply the gypsum plaster within 10 days.
- Recommended thickness for applying Ferrous Crete* Plaster in ceiling is 8-10mm.

Precautions:

Care should be taken not to apply window frames, door frames or other decorative surfaces, as once dried it will have to be scraped or washed for removing the same.

Should not be used where the plaster contributes to the designed fire performance or

Plays an essential part in fire protection.

Do not apply on wet surfaces.

Shelf Life: Best before 6 months from Date of Manufacturing.

Advantages:

- No hacking required.
- Excellent cohesive bond to RCC, Concrete and other surfaces.
- No curing required
- No shrinkage
- Moisture Tolerant
- Due to green colour, its is easy to see where it has been applied.
- Higher coverage
- Good mechanical, bonding strength
- Can be use directly on the surface.

Colour : Green

Pack Size : 5 Kg., 10 Kg. & 20 Kg.

Coverage:

Approximate 100 Sq.Mtr. per 20 Kg. bucket bag and also depending on the surface and application technique

FERRO - 500 Gypsum Plaster (One Coat Plaster)



Ferro 500 Gypsum Plaster is a gypsum based plaster suitable for application on all internally lined surface like Brick, Block Cement Sand Plaster, Old Scrap Surface and RCC Surface*. This ready mix plaster is an improved and finer grade of hemihydrates to which additive are further added to give excellent bonding, smooth finish, good workability and setting characteristics. The finish wall requires minimum surface preparation before painting. Ideal for use in green building.

Applications

Suitable for application on all internally lined surface like Brick, Block Cement Sand Plaster, Old Scrap Surface and RCC Surface*.

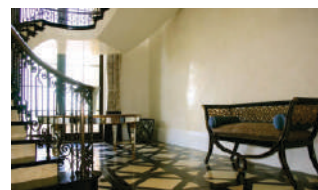
Advantages

- Direct application • High purity gypsum • No water curing • No shrinkage and cracks • Ever lasting • No wastage
- No maintenance • Saves time • Easy to use • Cost saving • Ever lasting • Environment friendly • Sets gradually
- Better Aesthetic value • It gives an off white coloured finish surface.

Coverage:

Approximate coverage is 68 Sq.Mtr./1000 kgs at 13 mm bed thickness.

Pack Size : 25 Kg.



Technical Data:

Technical Specification Data	
Application Background	Brick, block, RCC & Concrete surface with normal suction background
Advantages	Specially formulated for strong bonding & good strength, lower density and gradual setting with no shrinkage cracks.
Colour of finished Surface	Off white
Packaging	Available in 25 kg HDPE/PP bags.
Dry Bulk Density (Kg / m3)	Approx. 700 - 800
Setting Time (minutes)	Approx. 20 - 22
Coverage at 13 mm Bed Thickness (m2 / 1000kgs)	Approx. 65 - 68
Surface Smoothness	Smooth
Workability	Easier
Compressive Strength (Kg / cm2)	Approx. 50 - 65

*RCC Surface : Use Ferro - 400 Gypso Bond before plastering.

FERRO - 600 Gypsum Plaster (Premium Plaster)



Ferro 600 Gypsum Plaster is a gypsum based plaster suitable for application on all internally lined surface like Brick, Block Cement Sand Plaster, Old Scrap Surface and RCC Surface*. This ready mix plaster is an improved and finer grade of hemihydrates to which additive are further added to give excellent bonding, smooth finish, good workability and setting characteristics. It contains a light weight additives to improve plaster workability, coverage and application. The finish wall requires minimum surface preparation before painting. Ideal for use in green building.

Applications

Suitable for application on all internally lined surface like Brick, Block Cement Sand Plaster, Old Scrap Surface and RCC Surface*.

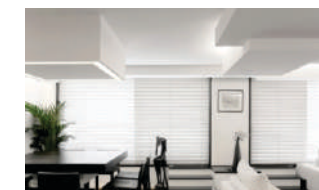
Advantages

- Smooth finishing • Excellent bonding • Strong and durable • High coverage • High strength • Premium quality
- Direct application • High purity gypsum • No water curing • No shrinkage and cracks • No wastage
- No maintenance • Saves time • Easy to use • Cost saving • Ever lasting • Environment friendly
- Better Aesthetic value • Sets gradually • It gives an white coloured finish surface.

Coverage:

Approximate coverage is 68 Sq.Mtr./1000 kgs at 13 mm bed thickness.

Pack Size : 25 Kg.



Technical Data:

Technical Specification Data	
Application Background	Brick, block, RCC & Concrete surface with normal suction background
Advantages	Specially formulated for strong bonding & good strength, lower density and gradual setting with no shrinkage cracks.
Colour of finished Surface	white
Packaging	Available in 25 kg HDPE/PP bags.
Dry Bulk Density (Kg / m3)	Approx. 650 - 750
Setting Time (minutes)	Approx. 24 - 28
Coverage at 13 mm Bed Thickness (m2 / 1000kgs)	Approx. 72 - 75
Surface Smoothness	Very smooth surface
Workability	Easier
Compressive Strength (Kg / cm2)	Approx. 45 - 55

*RCC Surface : Use Ferro - 400 Gypso Bond before plastering.

FERRO - 700 Gypsum Plaster (Platinum Plaster)

Ferrous Crete (Sara) Wall Putty



Ferro 700 Gypsum Plaster is a gypsum based plaster suitable for application on all internally lined surface like Brick, Block Cement Sand Plaster, Old Scrap Surface and Rcc Surface*. This ready mix plaster is an improved and finer grade of hemihydrates to which additive are further added to give excellent bonding, smooth finish, good workability and setting characteristics. It contains special additives which makes it expand when heated to a temperature sufficient to soften it and improve plasters workability, coverage and application. The finish wall requires minimum surface preparation before painting. Ideal for use in green building.

Applications

Suitable for application on all internally lined surface like Brick, Block Cement Sand Plaster, Old Scrap Surface and RCC Surface*

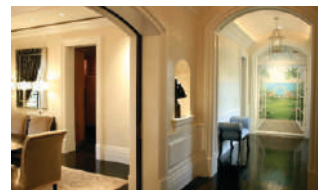
Advantages

- Smooth finishing • Excellent bonding • Strong and durable • High coverage • High strength • Premium quality
- Direct application • High purity gypsum • No shrinkage and cracks • No wastage • Zero maintenance • Saves time
- Easy to use • Cost saving • Ever lasting • Environment friendly • Better Aesthetic value • Sets gradually
- It gives an white coloured finish surface.

Coverage:

Approximate coverage is 88 – 92 Sq.Mtr./1000 kgs at 13 mm bed thickness.

Pack Size : 25 Kg.



Technical Data:

Technical Specification Data	
Application Background	Brick, block, RCC & Concrete surface with normal suction background
Advantages	Specially formulated for strong bonding & good strength, lower density and gradual setting with no shrinkage cracks.
Colour of finished Surface	white
Packaging	Available in 25 kg HDPE/PP bags.
Dry Bulk Density (Kg / m3)	Approx. 600 - 700
Setting Time (minutes)	Approx. 25 - 35
Coverage at 13 mm Bed Thickness (m2 / 1000kgs)	Approx. 88 - 92
Surface Smoothness	Silky finish surface
Workability	Easier
Compressive Strength (Kg / cm2)	Approx. 40 - 50

*RCC Surface : Use Ferro - 400 Gypso Bond before plastering.

SARA wall putty is a polymer based water resistant fine wall putty for concrete/mortar walls and ceilings. It has superior adhesive strength and durability. It does not require water curing. SARA wall putty renders a smooth and durable surface suitable for all kinds of paint. It serves as filler/leveler in the paint system and enhances durability.



Applications

Suitable for all kinds of paints, concrete, mortar, walls and ceilings.

Composition of Sara Putty:

- SARA wall putty is a well balanced mixture of:
- White Cement
- High Performance Specially Chemicals
- Water Retention Compounds
- Polymeric Binders
- Fungicides and Algaecides
- Silicon.

Surface Preparation:

All the loosely adhering and projecting material from the wall should be removed with the help of wire brush, putty blade or emery stone. The wall surface should be moistened with sufficient quantity of water to saturate the surface as well as to clean the dust/dirt.



Ferrous Crete (Sara) Wall Putty

Product Mixing and Application:

- Mix putty with water in the ration of 2:1. Mix thoroughly to get a uniform paste.
- Apply first coat of SARA wall putty uniformly on the prepared surface with the help of putty blade.
- Allow the surface to dry for at least 2-3 hours. Apply 2nd coat of putty if required to match with the adjacent area.
- Allow sufficient time to dry completely.
- Rub the surface with fine water proof emery paper to get a smooth surface ready for painting.

Conventional/ Acrylic Putty/ POP vs SARA Wall Putty

Conventional Putty

Does not resist water and gets peeled off
 Cannot be applied on exteriors
 Oil/Acrylic based - less adhesive strength
 Inconsistent quality
 Cannot be applied on moist surface
 Primer coat is must before applying paint
 Off-white & less smooth finish
 True Shade of colors not possible
 Coverage - Low Coverage

SARA Wall Putty

Water resistant
 Ideal on Interiors & Exterior surfaces
 Cement based- More adhesive strength
 Consistent quality
 Can be applied on moist surface
 No need of primer coat
 White & smooth finish
 True shade of colors possible
 High

Coverage: Approx. 2.0-2.5 sq M/kg/mm **Colour:** White

Pack Size: 5 Kg, 20 Kg, & 40 Kg.

Shelf Life: 12 months in unopened condition.



Ferrous Crete (Sara) Wall Putty

Technical Data:

Particle Size	:	150 micron
Whiteness	:	Approx. 90%
Max Thickness of total coats	:	Approx. 1.6 mm
Water Demand	:	Approx. 45-50%
Pot life	:	Approx. 2-3 hrs
Setting Time	:	Approx. 6-7 hrs
Surfaces Hardness	:	Approx. 2.5 N
Compressive Strength after 30 days	:	Approx. 11.50 N/mm ²
Tensile Strength after 30 days	:	Approx. 2.10 N/mm ²
Pot Life	:	Approx. 2-3 hrs

Advantages:

- Does not require curing
- High Adhesion Strength between Sara Putty & the Substrate
- Can be applied on wet as well as dry surfaces
- No need for Primer application on Sara Putty before applying paint
- Ideal substitute for dull finish Cement Wash
- Prevents the growth of Fungus & Algae
- Available in dry form & very easy to make & apply
- Fine Wall Putty

Precautions:

Care should be taken to avoid dust inhalation while mixing and handling powder. In case of contact with eyes or mouth, wash with plenty of water. Keep out of reach of children. Store in cool and dry place.



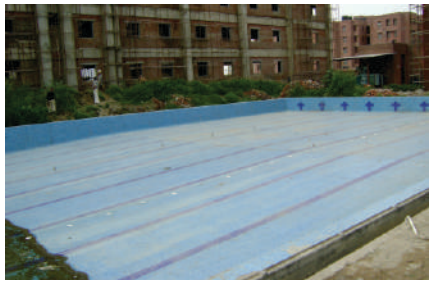
Product To Be Used

Surface of Application	Description	Recommended Product
Surface Preparation - Floor	SCT(self curing technology)	
	Wet method /dry method	Ferro Screed
	Thick Bed system	Ferro - 1155 + FAD - 22
Surface Preparation - Wall	Polymer Plaster - Ready to use	Ferro - 1155 + FAD - 22
	Polymer Plaster - Site Modification	FAD - 22
Tile/Stone Fixing		
Internal Floor	Ceramic Tiles	Ferro - 1111, Ferro - 1122
	Vitrified Tiles	Ferro - 1122, Ferro - 1144, Ferro - 1177, Ferro - 1133 + FAD -1/ FAD - 11
	Natural Stones	Ferro - 1133 + FAD -1/ FAD - 11, Ferro - 1177, Ferro - 1144
Internal Wet Floor	Ceramic Tiles, Vitrified Tiles, Natural Stone	Ferro - 1166
Internal Wall	Ceramic Tile	Ferro - 1111, Ferro - 1122
	Vitrified Tile	Ferro - 1133 + FAD - 1/ FAD - 11, Ferro - 1177, Ferro - 1144
	Natural Stones	Ferro - 1133 + FAD - 1/FAD - 11, Ferro - 1177
Tile Over Tile		Ferro - 1133 + FAD - 1, FAD - 11, Ferro - 1177, Ferro - 1144,
Tile/Stones Over Gypsum Board		Ferro - 1133 + FAD - 1 / FAD - 11, Ferro - 1177
Tile/Stone over External Wall		Ferro - 1133 + FAD - 1 / FAD - 11, Ferro - 1177
Glass Mosaic Tile Over Floor / Wall		Ferro - 1133 + FAD - 1/ FAD - 11, Ferro - 1177, Ferro - 1144
Tile /Stone Over Calcium Silicate Board	Internal use Primer coat of FAD - 1	Ferro - 1122 + FAD - 33, Ferro - 1133 + FAD - 1/FAD - 11, Ferro - 1177
	External Use	Ferro - 121 + Ferro - 1177, Ferro - 121+ Ferro - 1144
Tile /Stone over Plywood		Ferro - 1122 + FAD - 33, Ferro - 1177
Tile /Stone over Steel / Metal	Full Bonding System(Floor/Wall)	Ferro - 202
	Spot Fixing (only Wall)	Ferro - 302
Internal /External	AAC Block/Concrete Block	Ferro - 1188
Grouting		
Internal Floor/Walls		
Residential	Halls, Bedroom, Dining area	Ferro – 101 + FAG – 1, Ferro – 102
	Kitchens, Bathroom etc.	Ferro – 102

Product To Be Used

surface of Application	Description	Recommended Product
Commercial		
	Office rooms,	Ferro – 101 + FAG – 1
	Meeting Rooms etc	Ferro – 102 , Ferro – 101+ FAG - 1
	Corridor, Lobby, Services area etc	Ferro – 102 , Ferro – 101 + FAG – 1,
	Kitchens, Toilets, Cafeteria etc.,	Ferro – 102
External Floor/Wall		Ferro – 101 + FAG – 1
Swimming Pools/Water Bodies		Ferro – 102
Waterproofing		
Bathrooms		Ferro - 121
Terrace Gardens		Ferro – 121
Swimming Pools/Plunge Pools		Ferro – 121
External Walls		Ferro – 121
Suspended Pools		Ferro - 121
Sealers		
Porous Surface Internal / External	Ceramic Tiles, Marbles, Grout, Granite	Ferro – 201 (Aqua Sealer)
High Porous Surfaces Internal / External	Natural Marble, Granite, Sand Stone, Red Stone, Synthetic Stone	Ferro – 201 (Aqua Plus / Impregnator Plus)
Stain Repellent	Kitchen / Restaurant, Hospitals, Building, Facades	Ferro – 201 (Heavy Duty)
Plaster		
RCC Background/Walls		Ferro – 400 + Ferro – 500 / Ferro – 600 / Ferro 700
Internal Walls / Ceilings		Ferro – 500 / Ferro – 600 / Ferro – 700
Wall Care Putty		
Interior /Exterior		
	Undulations	Ferrous Crete (Sara) Wall Putty
	Wall & Ceiling to plumb	Ferrous Crete (Sara) Wall Putty
Cleaner		
Internal / External	Tile Area	3 in 1 Tile Cleaner
Wall / Floor		

***Note :** The Information given in this leaflet is for general guidance only. How ever, the company will not be responsible for any wrong application of the product.



Amity University



Rose wood city (Gurgaon)



Eldeco City (Noida)



Mayoor School (Noida)



Hotel Hyatt



Metro Station



Dhyan Chand National Stadium



Police Housing Project



Hotel The Grand



Dhyan Chand National Stadium



Parasvath Villa (Gurgaon)



V.P House



Pooniyana Farm House



Rail Bhawan (N. Delhi)



Gail India Ltd.

SOME OF OUR PRESTIGIOUS CLIENTS

HOTELS

- Hotel Radisson
- Hotel Claridges
- Hotel The Grand
- Hotel Hyatt
- Hotel ITC
- Hotel Pullman
- Hotel Howard Park Plaza
- Hotel Country Inn & Suites
- Hotel The Hans
- Hotel Leela Grande
- Hotel Ista
- Hotel Gulaab Niwaas
- Hotel Ashish
- Hotel Noor Mahal
- Hotel Gajraj
- Hotel Konica
- Hotel Shagun Palace
- Hotel Maharaja Palace
- Hotel Raj Malhotra
- Hotel K2

BUILDERS & DEVELOPERS

- Ansal Buildwel (P) Ltd.
- Assotech
- Bestech India (P) Ltd.
- Consolidate Construction Co. Ltd.
- Eldeco Group
- L & T Infrastructure Ltd.
- Shapoorji Pallonji & Co. Ltd.
- Unitech Ltd.
- Supertech Ltd.
- Ahluwalia Contracts (India) Ltd.
- Unity Infrastructure Ltd.
- JMC Projects Ltd.
- JP Infrastructure Ltd.
- EMMR MGF

- Vatika Ltd.
- ASF Insignia
- JMD Ltd.
- Raheja Developers (P) Ltd.
- BLK Lifestyle Ltd.
- Parswanath
- ITC
- Girdhari Lal Construction (P) Ltd.
- Brahmputra Co. Ltd.
- Simplex Infrastructure Ltd.
- DLF
- Ashiana Construction
- Pantlaloons
- Stelar Group
- Amity
- Chadda Group
- Good Year
- JCB
- Mc Donald
- Purvanchal Construction (P) Ltd.
- Apex Encon (P) Ltd.
- Manav Rachna International University
- Sapient
- AVJ Group
- Rose Wood City

GOVERNMENT

- Airport Authority of India
- CPWD
- Common Wealth Games
- DMRC
- PWD
- Indian Oil Corporation Ltd.
- Indian Oil Refinery
- Maried Acoomodation Project
- National Thermal Power Corporate

- ONGC
- Indian Institute of Technology
- CRR
- NITS
- Housing Board Project
- Police Housing Project
- RBI
- Indian Railway
- MES
- AIIMS
- JNU (Jawahar Lal Nehru University)
- NHPC
- PGI Hospital
- MTNL
- BSNL
- BSES
- ITI
- HPGCL
- DDA
- GAIL India Ltd.
- BHEL
- CSSRI
- GMADA
- PUDA
- Airforce
- Gautam Budh University
- Secretariat (HP)
- HUDA
- SPORTS**
- Yamuna Sports Complex
- Dhyanchand National Stadium
- Indira Gandhi Stadium
- National Games Village
- Sports Complex Sec. 78, Mohali
- Sport's Complex Sec. 69, Mohali
- Sport's Complex Sec. 71, Mohali